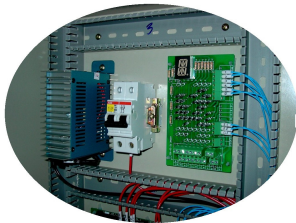
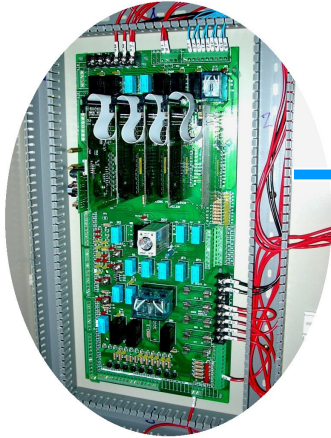


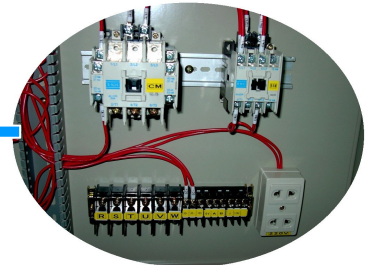
HE Type Microprocessor elevator controller has been designed and developed for below 6 stops 6 openings. By reducing the controller size remarkably, it is suitable for new and renewal installation of an old building that was constructed without space. HE Type controller will be very easy to install, convenient to maintain and can work with various brand of inverter.



Switching power supply,
Circuit breaker and
Car position indicator decoder board



Main Microprocessor CPU board
(32 bit) and I/O expansion boards



Magnetic contactor "Mitsubishi" S-N35, S-N11
Receptacle 220V and Power wires and Control
Wires terminals

Specification

- Power : 3-Phase 380V 50HZ
- Control Type : VVVF Microprocessor, Simplex Full Collective Control
- Number of Stop : Max. 6 Stops
- Main CPU : Microprocessor 32 bit
- Speed Reduction : Encoder 1024 Pulse
- Display : LED 7 or 16 Segment or Dot Matrix
- Speed : 45-105m/min
- Operation and functions : Full function for elevator usage
- Usage : Passenger Elevator, Freight Elevator

Price List

- ▶ Complete set with YASKAWA Inverter L7B 5.5kw
- ▶ Complete set with YASKAWA Inverter L7B 7.5kw
- ▶ Complete set with YASKAWA Inverter L7B 11kw
- ▶ Complete set with YASKAWA Inverter L7B 15kw

Free training and commissioning at site and 1 Year guaranty